



*Mums
from
Minnesota*

Faribault Growers, Inc.

Hardy Chrysanthemum Specialists



Mums from Minnesota

Faribault Growers, Inc.

Hardy Chrysanthemum Specialists

3135 227th St. E. • Faribault, Minnesota 55021

Phone (507) 334-6220 • Fax (507) 332-8280

email: fgj@ll.net • www.faribaultgrowersinc.com

Dear Gardening Friends,

We at Mums From Minnesota are proud to offer a quality lineup of true Minnesota hardy garden mums to you, our discerning customers. Our hardy mum stock is carefully grown, true to name and hardiness. We are also inspected and certified by the State of Minnesota to be free of disease and insects.

We have been strictly a wholesale operation for the past 20 years, but due to the increasing interest in truly hardy garden mums, we are now offering a good selection of our favorites. Some varieties date back to the 30's and 40's. We offer University of Minnesota introductions from the late 50's and early 60's along with U of M releases from as recent as 2001.

Over the years we have found it easier for our customers if we can identify the plant form and flower type by categorizing them into classes such as Garden Decorative, Football, and Novelty. Mum form for Garden Decorative is a compact rounded plant with a formal high petal count flower. The Football mums are an upright plant with a few large densely petaled flowers. Novelty varieties are for the most part sturdy, full plants with flower forms ranging from quills, daisies, spoons, and spiders.

Our mums will be grown in a 2½" (8.45 fl. oz. / 250 ml) square, deep perennial pot to insure good root development. The plants will have been pinched to increase branching and enhance root growth, adding to your overall success. We will provide an in depth cultural information sheet that should answer all questions you may have on growing our mums.

Mums will be available for shipping April 10th and continue until approximately June 15th. It is best to plant our mums at least 1 week after your area's last frost date. If unsure, check with your extension office. Please indicate a preferred ship date on the space provided on your order form.

Thank you!

The Staff at Mums from Minnesota



AUTUMN SUNSET



MAROON PRIDE



STADIUM QUEEN



MINNWHITE



BETTY LOU



DAISY WHITE



ZONTA



MINN RUBY



GRAPE

GARDEN DECORATIVE

AUTUMN SUNSET (Lehman) Fiery red, gold and yellow on every petal. A real Autumn sunburst. Very full 16" plant with many 3" flowers. Everyone's favorite last fall. September 5

BETTY LOU (U. of M. New Maxi Mum) Striking red button, early bloomer. Attractive addition to any garden, excellent winter hardiness. Bloom from late June or early July through the fall. 30" high. Early July

BRISTOL WHITE Early 4" white decorative on huge round mounded plant 16".

CAJUN SPICE A 2-2½" golden orange with bronze eye flower. Plant has a cushion habit. A real fall winner! September 7

CAMEO Excellent true pink 2" blossom on a full 15" cushion plant. September 15

GRAPE GLOW (U. of M. #82-A30-13) Radiates with 3½" bright rosy-purple decorative flowers whose petals show a silver reverse. The stocky plants are 15" high with a spread of 20". Foliage is clean, medium green. Early September

MAROON PRIDE (U. of M. #82-A31-12) Rich dark-red 3½" slow fading, fully double decorative flowers atop a medium height uniformly mounded plant. Plant has dark green foliage on a 28-30" wide plant with 18-20" stems. Very adaptable plant for Spring-flowering with natural day length. This Mum will soon become a real garden winner! Late August

MINNAUTUMN (U. of M.) A spreading true cushion of intense orange-red 2" flowers that easily attain a diameter of 20" and a height of 15". September 4

MINNRUBY (U. of M.) Dark red, 2" to 2½" double blooms atop a 12" high 20" wide cushion plant. A somewhat smaller and earlier Ruby Mound. September 10

MINNWHITE (U. of M.) Vigorous cushion completely covered with hundreds of full double 2" flowers with cream centers which mature to white, 12". Early September

MINNYELLOW (U. of M.) Hundreds of bright yellow 2" flowers completely covers mounded plant, 15". Early September

PURPLE PRIDE Deep purple blooms completely cover cushion plant. September 25

RUBY MOUND (Lehman) Sensational deep ruby-mound. Pigment penetrates petals avoiding faded flowers. Far ahead of anything we have seen in red cushion. September 22

SESQUI CENTENNIAL SUN (New from U. of M. to celebrate their 150 years) Bright yellow 1½" hardy button. Excellent for Spring and Fall pots. September 10

SUNNY MORNING (Dooley) Bright golden yellow 3" decorative blossoms. 14" high. Dense cushion habit. September 20

ZONTA (U. of M.) Attractive 2½" apricot-bronze fuzzy double flowers, 16" high. September 1



MINNAUTUMN



ROSE GRENADINE



DOLLIETTE



RUBY MOUND

FOOTBALLS

CHEERLEADER A big incurved deep gold Football Mum. Can be disbudded for 5" to 6" blooms. September 25

FANCY FREE Very large soft lavender football Mum. Can be disbudded for a 5" to 6" flower. September 25

***GOLD COUNTRY** (U. of M.) An attractive golden yellow fully double 4½" incurve decorative flower. Plants average 20" to 21" high and almost as wide with medium stiff stems. This variety is very showy in the flower garden and useful for cut flower purposes. September 7

*** HOMECOMING** Huge football Mum, incurved bright salmon-pink. September 5

*** IRISH LINEN** (Lehman) Exquisite pure ivory incurve 5-6" flowers! Blossoms cover 24" dark foliage bushy plant. For something different! September 1

*** MELLOW MOON** (U. of M.) 5" cream colored, semi-incurved. Fully double decorative flowers which do not pink in cold weather. The stocky, sturdy, stiff stemmed plants are densely covered with rich green foliage. 16" to 18" high plants that get to 22" across. This plant is unusually compact for a large flowering variety. September 10

PAT LEHMAN Sparkling salmon-pink with peach center. Flowers large with fluffy appearance. A grand Mum. September 28

*** STADIUM QUEEN** A real "Football Mum" far superior to the Harvest Giants. Huge 6-7" incurved flower rich-red with gold reverse. A wonder Mum from the U. of Nebraska. September 15

YELLOW GIANT Very large semi-incurved flowers of clear yellow upright plants. Very early. Excellent in the North. September 14

**NOVELTIES
(Spiders, Spoons, Daisies)**

CENTERPIECE (U. of M. 1984) Flowers are 4" deep lavender duplex quills which show frost resistance. A very uniform 24" plant with dark green foliage and willowy stems making a very good cut flower. This plant seems well adapted to Spring pot culture. September 5

DAISY WHITE Large 3" white Daisies on a very strong uniform plant. Great for fall pots. September 10

DOLLIETTE An extremely interesting novelty cushion! Bronze spoon with red tips. Picked up by our customers as soon as it begins to bloom. September 25

GOLDEN STAR (U. of M.) Produces 3½" single, spoon-petal, rich yellow, frost resistant flowers. Flowers cover mounds averaging 13" high and 20" wide. New flushes of flowers develop regularly until killing frost. August 25

ICE CRYSTAL Beautiful large quilled white spoon up to 4" across. Strong 20" to 22" plant. September 20

MATCHSTICK Early, medium sized red quill on 16" plants.

PEACH CENTERPIECE Flowers are 4" peach-toned duplex quills. A uniform plant with rich green foliage. Good for cut flower. September 5

RED DAISYMUM Extremely large deep red flower on a very bushy 24" plant. September 10

***SEA URCHIN** Clusters of large, double, quilled chartreuse-yellow blooms. September 15

SNOWSCAPE (U. of M.) Semi-double decorative Mum. Bi-color patterning of purple and white makes it look similar to Dahlia flower. Blooms early August until freeze. August

STARLET Attractive spoon-tipped daisy covering a very full cushion plant. Honey-bronze flowers are profusely and evenly produced on plant. September 25

SUN SPIDER Large semi-double 5" spidery bright yellow flowers on a low bushy plant. September 15

TALISMAN (Lehman) A variety of colors on one plant. From cream and light yellow shades through pink to bronze-orange, late. Early cut flower. Real different! Early September

YELLOW DAISYMUM Fine yellow single with gold center. A must with the Daisywhite. September 15



SESQUI CENTENNIAL SUN



CENTERPIECE



RED DAISY

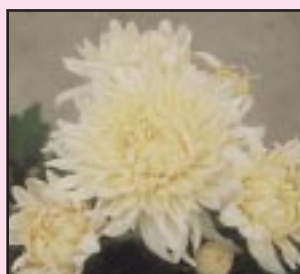


CAMEO

NEW!
SPECIAL MUM COLLECTIONS
*You receive 12 plants of our choice.
Please choose which category you would like your collection from:*
**Garden Decorative
Football
Novelty
Mix & Match Categories
(4 from each category)**



GLOW



MELLOW MOON



PURPLE PRIDE



GOLD COUNTRY



MINNYELLOW



BRISTOL WHITE



BRONZE GIANT



CAJUN SPICE



CHEERLEADER



DOROTHY DEGN



FANCY FREE



GOLDEN STAR



HAPPY FACE



HOMECOMING



ICE CRYSTALS



IRISH LINEN



MATCHSTICK



PAT LEHMAN



PEACH CENTERPIECE



ROSE BLUSH



SEA URCHIN



SMALL WONDER



SNOWSCAPE



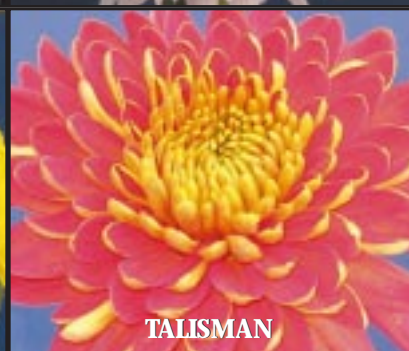
STARLET



SUN SPIDER



SUNNY MORNING



TALISMAN



YELLOW DAISYMUM



YELLOW GIANT

NEW!

***ONLY FOR OUR
RETAIL CUSTOMERS!***

We have recently acquired 5 mums from another grower and have found them to be a good fit in our program.

Stock is extremely limited so we are only offering these varieties to our retail customers.



Debutante

Decorative purple blooms
Early blooming. Nice
mounding shaped plant.
Flowers are 1½-2".



Carrousel

Purple quill flowers.
Early blooming.
More upright shape.
Flowers are 3".



Red Carrousel

A sport of Carrousel.
Flowers are light red.
4-6" flowers. Early.
Height 18-20"



Daisy Gold

Loads of beautiful gold
2" daisy flowers. Blooms
early September. Great
plant shape. 15"

Butterscotch Centerpiece

(no picture available)
Spoon tipped sport of
peach centerpiece.
More golden in color.
4" flowers. Upright.
Early September.

Prices are:

1-9 plants-\$2.50 ea.

10-31 plants-\$2.25 ea.

32+ plants-\$2.00 ea.

NEW!

MAMMOTH MUMS

(Bred by the University of Minnesota)

Bred to withstand temperatures to -30 degrees F, these extremely hardy perennials perform equally well in warm climates.

By the second year, they can grow to be 4' across.

Hundreds of flowers per plant make a tremendous impact as hedges or when used in mass plantings.



Coral Daisy



Dark Bronze Daisy



Dark Pink Daisy



Red Daisy



Yellow Quill



Twilight
NEW!

Prices are:

\$3.00 each

\$2.25 each for 10 or more

\$15.00 for a collection

(1 of each color)